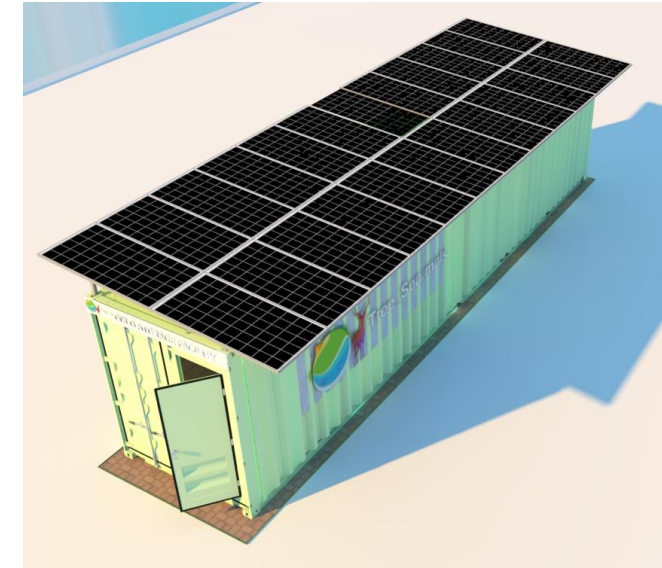
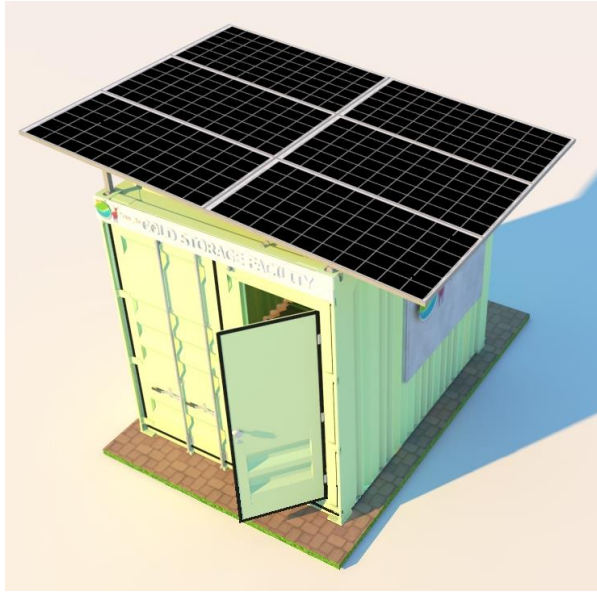




Tree\_Sea.mals

## SOLAR POWERED COOLING STORAGE SYSTEMS



<b>Container</b>	10 ft	20 ft	40 ft
<b>Dimensions</b>	2.99m x 2.35m x 2.39m	5.90m x 2.35m x 2.39m	12.19m x 2.44m x 2.59m
<b>Solar Power</b>	2kW	4kW	8kW
<b>Backup</b>	24 hour with loading and no door opening condition		
<b>Product Capacity</b>	1-3Metric Tonnes	3-5 Metric Tonnes	7-9 Metric Tonnes
<b>Temperature Range</b>	2 °C- 20° C		
<b>Application</b>	Storage of fruits, vegetables and dairy products		
<b>Insulation</b>	100mm thick Polyurethane		